



Connectors > Automotive Connectors > Automotive Connector Accessories > Automotive Connector Caps & Covers



Primary Product Color: **Black**

Protection & Strain Relief Accessory Type: **Cover Housing**

Primary Product Material: **PBT**

Cable Exit Angle: **180°**

Strain Relief: **With**

Features

Product Type Features

Sealable	Yes
Protection & Strain Relief Accessory Type	Cover Housing

Body Features

Primary Product Color	Black
Primary Product Material	PBT
Cable Exit Angle	180°

Mechanical Attachment

Strain Relief	With
---------------	------

Dimensions

Compatible Cable Bundle Diameter Range	8.4 mm[.331 in]
--	-----------------

Industry Standards

UL Flammability Rating	UL 94HB
------------------------	---------

Packaging Features

Packaging Method	Bag
Packaging Quantity	400

Other

Serviceable	Yes
-------------	-----

Product Compliance

[For compliance documentation, visit the product page on TE.com>](#)

EU RoHS Directive 2011/65/EU	Compliant
EU ELV Directive 2000/53/EC	Compliant
China RoHS 2 Directive MIIT Order No 32, 2016	No Restricted Materials Above Threshold
EU REACH Regulation (EC) No. 1907/2006	Current ECHA Candidate List: JAN 2025 (247) Candidate List Declared Against: JAN 2025 (247) Does not contain REACH SVHC
Halogen Content	Low Halogen - Br, Cl, F, I < 900 ppm per homogenous material. Also BFR/CFR/PVC Free
Solder Process Capability	Not applicable for solder process capability

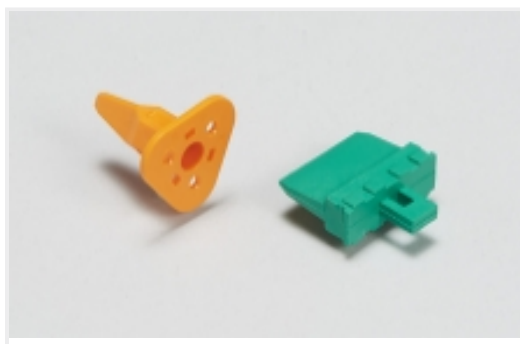
Product Compliance Disclaimer

This information is provided based on reasonable inquiry of our suppliers and represents our current actual knowledge based on the information they provided. This information is subject to change. The part numbers that TE has identified as EU RoHS compliant have a maximum concentration of 0.1% by weight in homogenous materials for lead, hexavalent chromium, mercury, PBB, PBDE, DBP, BBP, DEHP, DIBP, and 0.01% for cadmium, or qualify for an exemption to these limits as defined in the Annexes of Directive 2011/65/EU (RoHS2). Finished electrical and electronic equipment products will be CE marked as required by Directive 2011/65/EU. Components may not be CE marked. Additionally, the part numbers that TE has identified as EU ELV compliant have a maximum concentration of 0.1% by weight in homogenous materials for lead, hexavalent chromium, and mercury, and 0.01% for cadmium, or qualify for an exemption to these limits as defined in the Annexes of Directive 2000/53/EC (ELV). Regarding the REACH Regulation, the information TE provides on SVHC in articles for this part number is based on the latest European Chemicals Agency (ECHA) 'Guidance on requirements for substances in articles' posted at this URL: <https://echa.europa.eu/guidance-documents/guidance-on-reach>

Compatible Parts



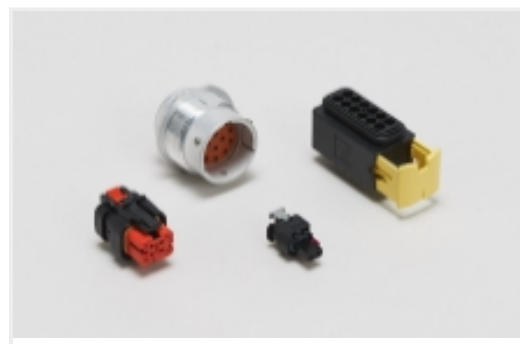
Also in the Series | [AMP MCP 2.8](#)



Automotive Connector Locks & Position Assurance(4)



Automotive Headers(31)



Automotive Housings(257)



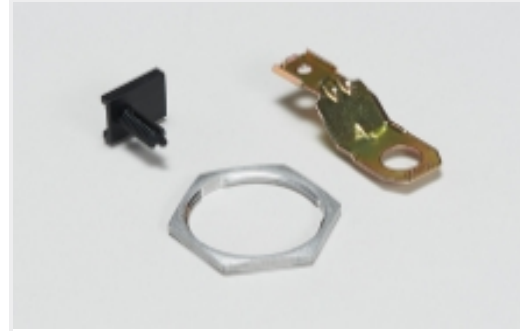
Connector Seals & Cavity Plugs(5)



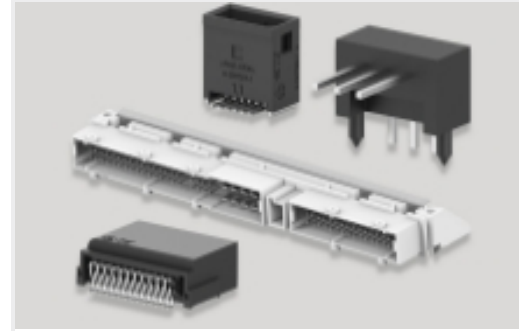
Insertion & Extraction Tools(13)



Module Components(1)



Other Automotive Connector Accessories(3)

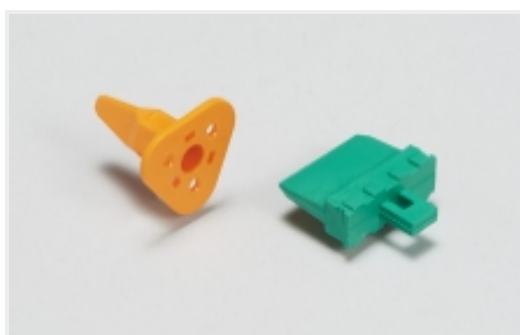


PCB Headers & Receptacles(31)



Rectangular Power Connectors(15)

Also in the Series | AMP MCP Connector System



Automotive Connector Locks & Position Assurance(4)



Automotive Headers(31)



Automotive Housings(257)



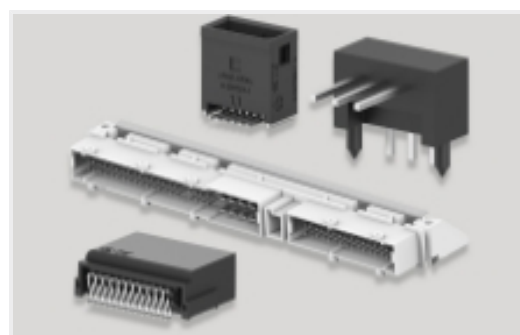
Connector Seals & Cavity Plugs(5)



Insertion & Extraction Tools(13)



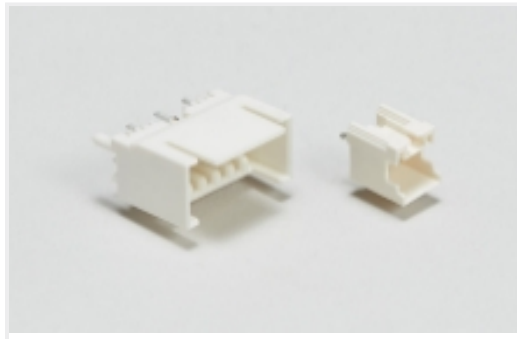
Other Automotive Connector Accessories(3)



PCB Headers & Receptacles(31)



Rectangular Power Connectors(15)



Wire-to-Board Headers & Receptacles
(30)

Customers Also Bought



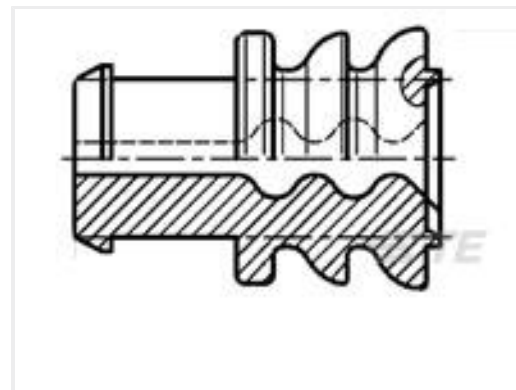
TE Part #2299956-1
MCP 6.3MM 4P PLUG ASSY A



TE Part #1743262-1
HYBRID 15P PLUG ASSY(DTB)



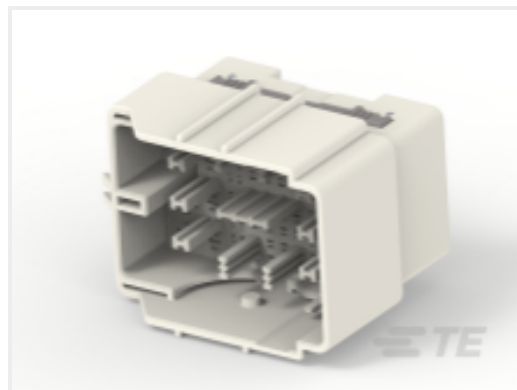
TE Part #1-2219215-2
HYB SLD 38P COVER HSG W/O CPA



TE Part #368932-1
WIRE SEAL FOR JPT(TYPE-I) BLUE



TE Part #2109006-3
060 REC(M) CONT



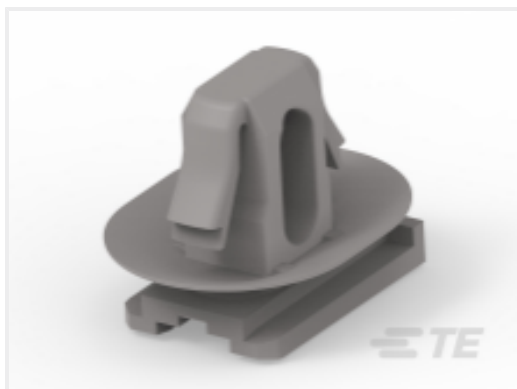
TE Part #2188501-1
LIF HYB 80P CAP ASSY NAT



TE Part #936059-1
2.8MM SLD 2P PLUG ASSY



TE Part #936257-2
MCP-E SLD 6P PLUG ASSY BLK



TE Part #3-2188213-3
CLIP FOR JOINT CONN ASSY



TE Part #2366531-1
0.64 SERIES, TERMINAL, 025K SS

Documents

Product Drawings

[COVER FOR MCP-E SLD 6P PLUG](#)

English

CAD Files

[3D PDF](#)

3D

Customer View Model

[ENG_CVM_CVM_936303-2_O_c-936303-2-o.2d_dxf.zip](#)



English

Customer View Model

[ENG_CVM_CVM_936303-2_O_c-936303-2-o.3d_igs.zip](#)

English

Customer View Model

[ENG_CVM_CVM_936303-2_O_c-936303-2-o.3d_stp.zip](#)

English

By downloading the CAD file I accept and agree to the [Terms and Conditions](#) of use.

Product Specifications

[Product Specification](#)

English