

1-338096-1 ✓ ACTIVE

Micro-MaTch | Micro-MaTch Industrial

TE Internal #: 1-338096-1

Pin Contact, Tin (Sn), 28 – 24 AWG, .09 – .2 mm² Wire, Brass, Signal,
-40 – 105 °C [-40 – 221 °F], Micro-MaTch Industrial

[View on TE.com >](#)



Connectors > Contacts > Connector Contacts > Crimp Contacts - Micro-MaTch



Contact Type: **Pin**

Contact Mating Area Plating Material: **Tin (Sn)**

Wire Size: **.09 – .2 mm²**

Contact Base Material: **Brass**

[All Crimp Contacts - Micro-MaTch \(4\)](#)

Features

Contact Features

Mating Tab Thickness	.41 mm[.016 in]
Mating Tab Width	.7 mm[.027 in]
Contact Type	Pin
Contact Mating Area Plating Material	Tin (Sn)
Contact Base Material	Brass
Contact Current Rating (Max)	1.5 A

Termination Features

Product Terminates To	Wire & Cable
-----------------------	--------------

Dimensions

Wire Size	.09 – .2 mm ²
-----------	--------------------------

Usage Conditions

Operating Temperature Range	-40 – 105 °C[-40 – 221 °F]
-----------------------------	----------------------------

Operation/Application

Circuit Application	Signal
---------------------	--------

Packaging Features

Packaging Method	Reel
------------------	------

Product Compliance

[For compliance documentation, visit the product page on TE.com>](#)

EU RoHS Directive 2011/65/EU	Compliant
EU ELV Directive 2000/53/EC	Compliant
China RoHS 2 Directive MIIT Order No 32, 2016	No Restricted Materials Above Threshold
EU REACH Regulation (EC) No. 1907/2006	Current ECHA Candidate List: JAN 2025 (247) Candidate List Declared Against: JAN 2025 (247) Does not contain REACH SVHC
Halogen Content	Low Halogen - Br, Cl, F, I < 900 ppm per homogenous material. Also BFR/CFR/PVC Free
Solder Process Capability	Not applicable for solder process capability

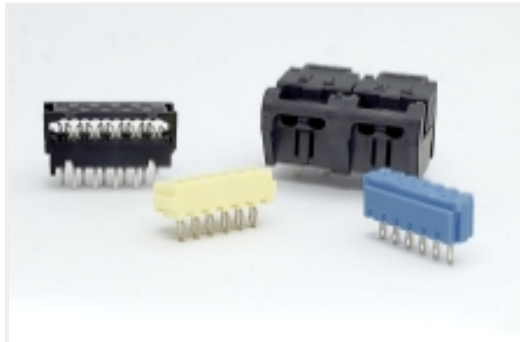
Product Compliance Disclaimer

This information is provided based on reasonable inquiry of our suppliers and represents our current actual knowledge based on the information they provided. This information is subject to change. The part numbers that TE has identified as EU RoHS compliant have a maximum concentration of 0.1% by weight in homogenous materials for lead, hexavalent chromium, mercury, PBB, PBDE, DBP, BBP, DEHP, DIBP, and 0.01% for cadmium, or qualify for an exemption to these limits as defined in the Annexes of Directive 2011/65/EU (RoHS2). Finished electrical and electronic equipment products will be CE marked as required by Directive 2011/65/EU. Components may not be CE marked. Additionally, the part numbers that TE has identified as EU ELV compliant have a maximum concentration of 0.1% by weight in homogenous materials for lead, hexavalent chromium, and mercury, and 0.01% for cadmium, or qualify for an exemption to these limits as defined in the Annexes of Directive 2000/53/EC (ELV). Regarding the REACH Regulation, the information TE provides on SVHC in articles for this part number is based on the latest European Chemicals Agency (ECHA) 'Guidance on requirements for substances in articles' posted at this URL: <https://echa.europa.eu/guidance-documents/guidance-on-reach>

Compatible Parts



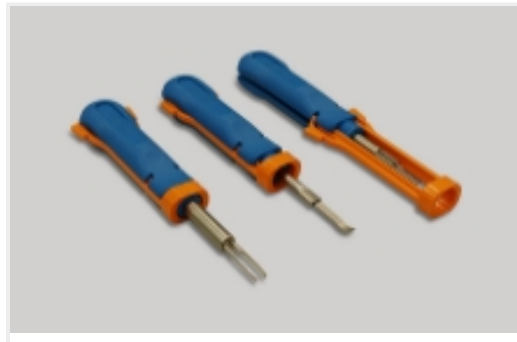
Also in the Series | [Micro-MaTch Industrial](#)



Board-In Connectors(20)



Connector Contacts(4)



Insertion & Extraction Tools(1)



Pluggable I/O Cable Assemblies(52)



Ribbon Cable Connectors(183)

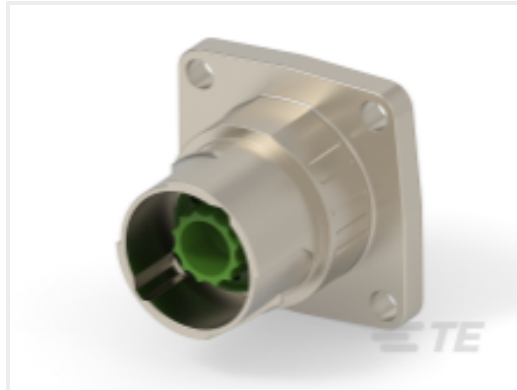
Customers Also Bought



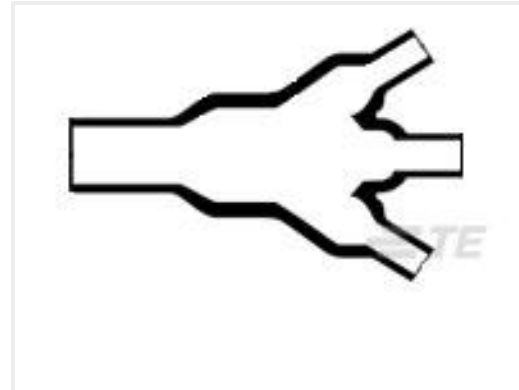
TE Part #2-2176177-0
CRGH0603 1% 5K6 0.2W



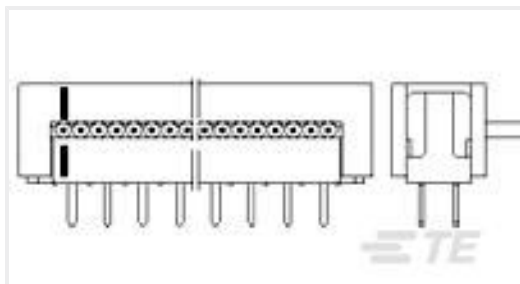
TE Part #NB11644001
ATUM-6/2-0-SP



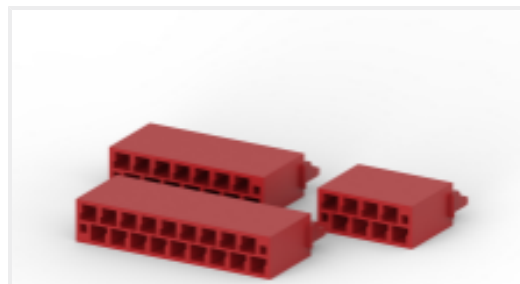
TE Part #EEA001N00000002000
615 ITEC RECEPTACLE



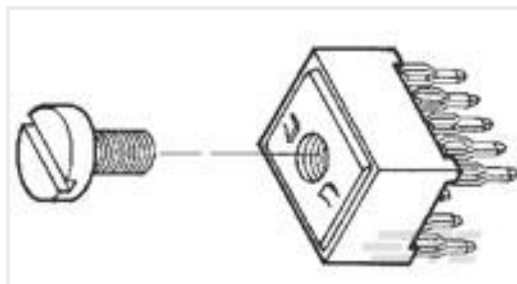
TE Part #201443-000
462A046-25/225-0



TE Part #3-216093-4
AMP-LATCH PRE-ASSY DIL WITHO



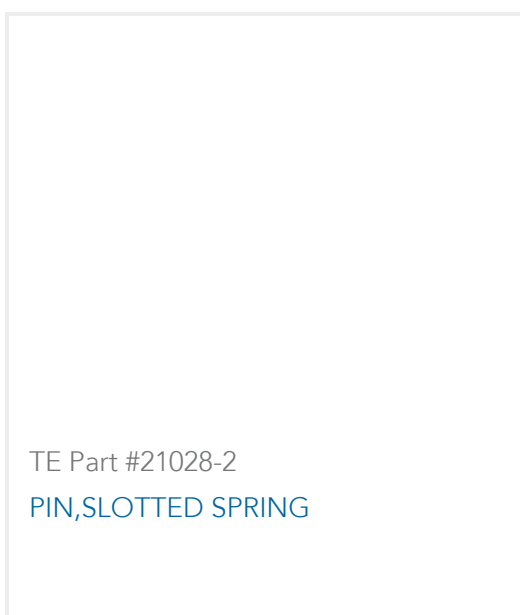
TE Part #CAT-M5833-C8684
Crimp-on-Snap-in Housing



TE Part #5055556-9
10 POWER TAP ASSY .125



TE Part #4-1622824-5
RL73H 3A R82 1% 4K RL



TE Part #21028-2
PIN,SLOTTED SPRING

Documents



Product Drawings

MICRO-MATCH COSI CONTACT

English

CAD Files

Customer View Model

[ENG_CVM_1-338096-1_E.3d_igs.zip](#)

English

Customer View Model

[ENG_CVM_1-338096-1_E.3d_stp.zip](#)

English

Customer View Model

[ENG_CVM_1-338096-1_E.2d_dxf.zip](#)

English

3D PDF

English

By downloading the CAD file I accept and agree to the [Terms and Conditions](#) of use.

Datasheets & Catalog Pages

Micro-MaTch Catalog

English

Ribbon Cable Interconnect Solutions

English

Centerline Micro-Match Connector Series

English

Product Specifications

micro-match crimp on snap in male on wire connector

English

Application Specification

English