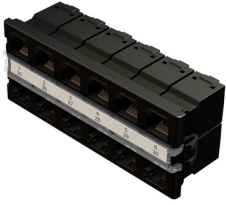




**Product:** [RV5PPTM12JBK](#)

REVConnect HD Patch Panel Termination Module, Cat 5e, 12 Port



## Product Description

REVConnect Category 5e Patch Panel Termination Module, 12 Port, Black

## Technical Specifications

### Product Overview

Suitable Applications:	REVConnect 1200 System, Ethernet 1000BASE-T, Ethernet 100BASE-TX, Ethernet 10BASE-T, PoE++, PoE+, PoE
------------------------	---

### Physical Characteristics (Overall)

Height:	1.73
Width:	4.33
Depth:	1.52
Port Count:	12 Port
Packaging:	Individually packaged in a cardboard box.
Weight:	0.353

### Connectors

#### Materials

Description	Material	Type
Front Connection	Copper Clad Flexible PCB, 50µin Gold-plated Contacts over Nickel	RJ45
Rear Connection	Copper Alloy, Gold-plated Contacts over Nickel	REVConnect
Connector Body	PBT Glass Reinforced UL94V-0	

### Construction and Dimensions

Max Capacity:	12 Connectors (Preloaded)
---------------	---------------------------

### Electrical Characteristics

Dielectric Strength:	1,000 V RMS @ 60 Hz for 1 minute
Current Rating:	1.300 A
Insulation Resistance:	500 M-Ohm Minimum
Termination Resistance:	2.5 mOhm

### Temperature Range

Installation Temperature Range:	-10°C to +60°C
Storage Temperature Range:	-40°C to +70°C
Operating Temperature Range:	-10°C to +60°C

### Mechanical Characteristics

Footprint/Type:	REVConnect
Tool Compatibility:	REVConnect Termination Tool (RVUTT01)
Plug /Jack Compatibility:	RJ45
Termination Front Connection:	Mated Connection

Termination Front Connection Durability:	750 Cycles
Termination Rear Connection:	Mated Connection
Termination Rear Connection Durability:	20 Cycles
Cable/Connector Retention:	15 lbs
Connector/Hardware Retention:	20 lbs
Plug/Connector Retention:	11.250 lbs

## Standards

UL Rating:	UL94V-0
Data Category:	Category 5e
TIA/EIA Compliance:	Category 5e - TIA 568-C.2
IEEE Compliance:	Power Over Ethernet (PoE) IEEE 802.3at type 1 and 2 (up to 30W), IEEE802.3bt/D1.7 type 3 and 4 (up to 100W), CISCO UPOE (up to 60W), Power over HDBaseTTM (up to 100W)
Other Standards:	FCC Part 68, Subpart F, IEC 60603-7

## Applicable Environmental and Other Programs

Environmental Space:	Indoor
EU Directive 2011/65/EU (RoHS 2):	Yes
MII Order #39 (China RoHS):	EUP 50

## Flammability, LS0H, Toxicity Testing

Safety Listing:	c(UL)us Listed
-----------------	----------------

## Related Part Numbers

Related Parts:	REVConnect Termination Tool, Cat 5e Modular Cords, REVConnect Empty High Density Patch Panels
----------------	---

## Variants

Item #	Color
RV5PPTM12JBK	Black

## Product Notes

Included Parts:	12 Cat 5e REVConnect High Density Jacks, Black, Preloaded; 12 REVConnect Cable Managers and Caps; 1 Clear Window; 1 Frame; 1 Installation Guide
Notes:	For proper installation, refer to Installation Guide PX107031.

## History

Update and Revision:	Revision Number: 0.22 Revision Date: 05-10-2023
----------------------	---

© 2023 Belden, Inc

All Rights Reserved.

Although Belden makes every reasonable effort to ensure their accuracy at the time of this publication, information and specifications described here in are subject to error or omission and to change without notice, and the listing of such information and specifications does not ensure product availability.

Belden provides the information and specifications herein on an "ASIS" basis, with no representations or warranties, whether express, statutory or implied. In no event will Belden be liable for any damages (including consequential, indirect, incidental, special, punitive, or exemplary damages) whatsoever, even if Belden has been advised of the possibility of such damages, whether in an action under contract, negligence or any other theory, arising out of or in connection with the use, or inability to use, the information or specifications described herein.

All sales of Belden products are subject to Belden's standard terms and conditions of sale.

Belden believes this product to be in compliance with all applicable environmental programs as listed in the data sheet. The information provided is correct to the best of Belden's knowledge, information and belief at the date of its publication. This information is designed only as a general guide for the safe handling, storage, and any other operation of the product itself or the one that it becomes a part of. The Product Disclosure is not to be considered a warranty or quality specification. Regulatory information is for guidance purposes only. Product users are responsible for determining the applicability of legislation and regulations based on their individual usage of the product.