

## SEK-18 SV FE TYPA 14P PL3

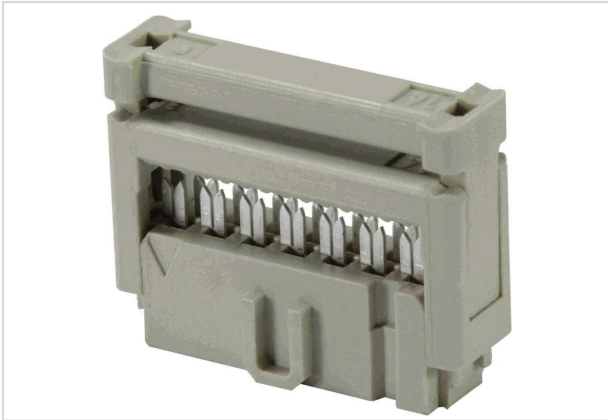


Image is for illustration purposes only. Please refer to product description.

Part number	09 18 514 7803
Specification	SEK-18 SV FE TYPA 14P PL3
HARTING eCatalogue	<a href="https://harting.com/09185147803">https://harting.com/09185147803</a>

### Identification

Category	Connectors
Series	SEK
Element	Female connector

### Version

Connection type	PCB to cable
Number of contacts	14
Details	for IDC flat cable 1.27 mm (0.050") pitch AWG 28/7 - AWG 26/7

### Technical characteristics

Contact rows	2
Contact spacing (termination side)	2.54 mm
Contact spacing (mating side)	1.27 mm
Rated current	2.5 A
Insulation resistance	$>10^9 \Omega$
Contact resistance	$\leq 20 \text{ m}\Omega$
Limiting temperature	-55 ... +125 °C
Insertion force	$\leq 42 \text{ N}$
Withdrawal force	$\leq 42 \text{ N}$
Performance level	3 acc. to IEC 60603-13
Mating cycles	$\geq 50$



Pushing Performance  
Since 1945

## Technical characteristics

Test voltage $U_{r.m.s.}$	1 kV
Isolation group	IIIa ( $175 \leq CTI < 400$ )

## Material properties

Material (insert)	Thermoplastic resin (PBT)
Colour (insert)	Grey
Material (contacts)	Copper alloy
Surface (contacts)	Noble metal over Ni Mating side Sn over Ni Termination side
Material flammability class acc. to UL 94	V-0
RoHS	compliant
ELV status	compliant
China RoHS	e
REACH Annex XVII substances	Not contained
REACH ANNEX XIV substances	Not contained
REACH SVHC substances	Not contained
California Proposition 65 substances	Yes
California Proposition 65 substances	Antimony trioxide Nickel
Fire protection on railway vehicles	EN 45545-2 (2020-08)
Requirement set with Hazard Levels	R26

## Specifications and approvals

Specifications	IEC 60603-13
UL / CSA	UL 1977 ECBT2.E102079 CSA-C22.2 No. 182.3 ECBT8.E102079
Railway classification	F3/I3

## Commercial data

Packaging size	100
Net weight	1.9 g
Country of origin	Romania
European customs tariff number	85366990
GTIN	5713140028241
ETIM	EC002637



**Pushing Performance**  
Since 1945

## Commercial data

eCl@ss

27460202 PCB connector (conductor connection)